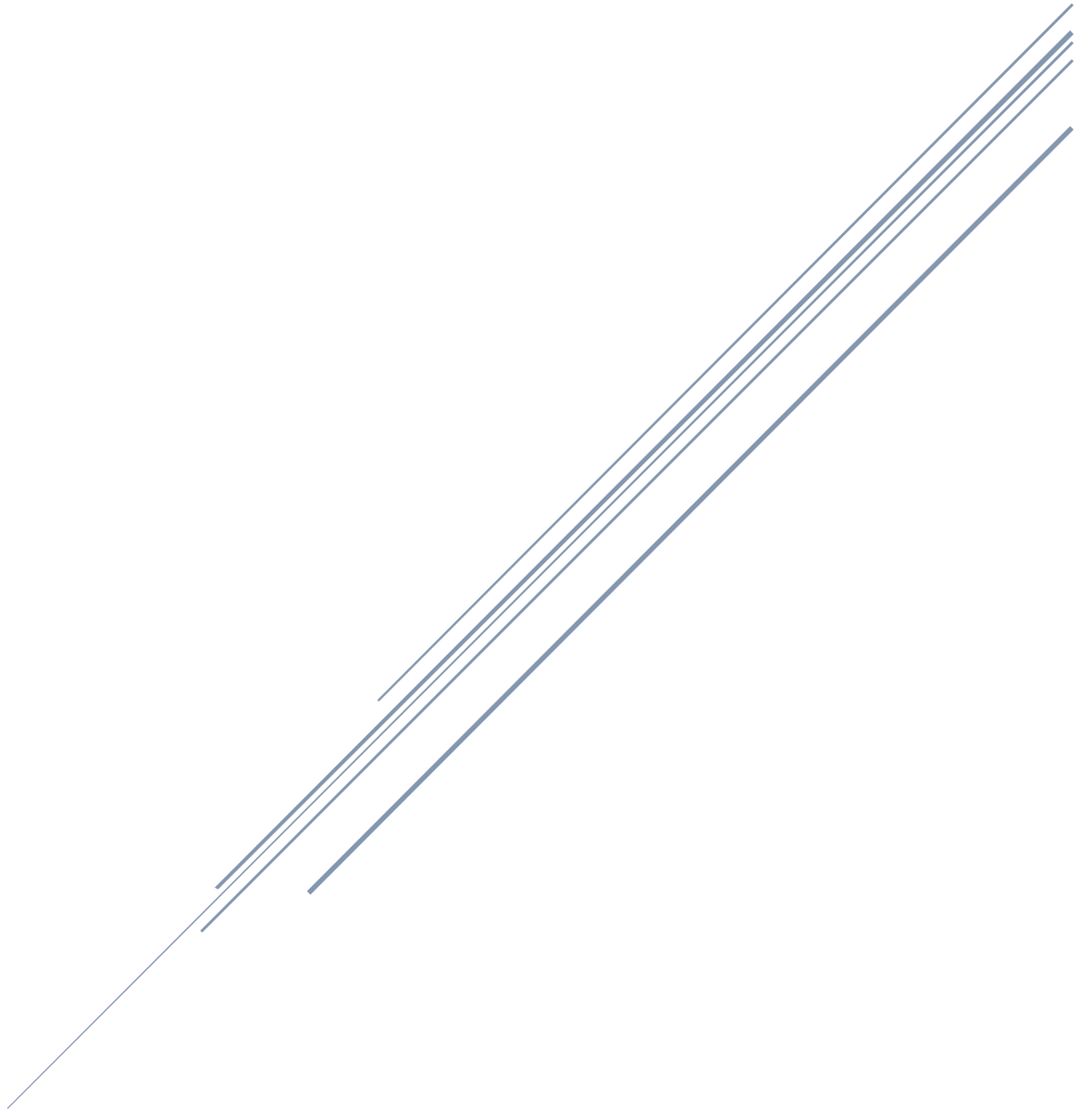
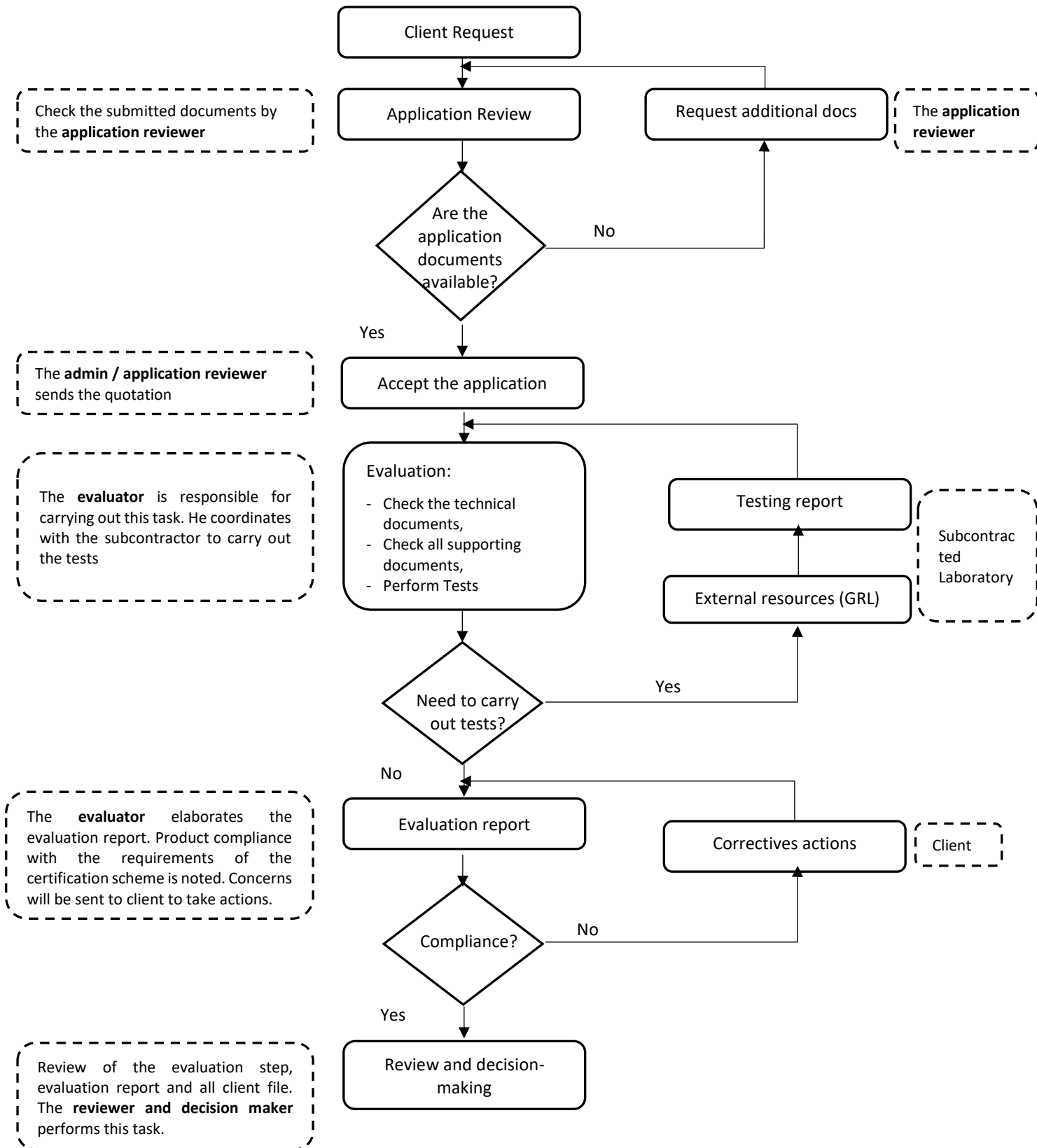


GCCLAB - PRODUCT CERTIFICATION

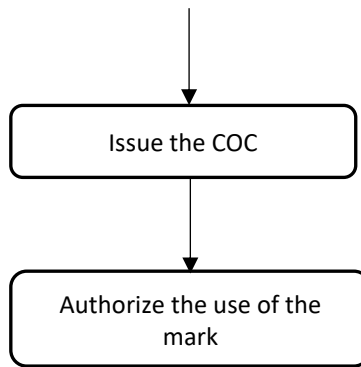
ISO/IEC 17065:2012 - Conformity assessment



FLOWCHART FOR CERTIFICATION PROCESS



- COC is signed by the **Product certification Manager**,
- The invoice is established by the **administrator** and sent to the client
- The Mark of conformity is issued and communicated to the client



RULES FOR USE OF GCCLAB MARK

General conditions:

The GCCLAB mark for Solar PV Panels shall be affixed on each manufactured unit under the sole responsibility of Certified body.

The GCCLAB mark shall be displayed in the appropriate form only, taken into consideration the dimensions and color detailed in this guide.

Certified Bodies shall base all reproductions of the GCCLAB mark only from master versions provided by the Certification Body "GCC LAB". It is strictly prohibited to modify and change the design or the appearance of the master version of GCCLAB mark.

it should be noted that the design formats shown in this document are for illustration only, and not made for any reproduction.

The mark GCCLAB shall not be used in such a way as to imply that the GCC LAB, as a certification body, accepts responsibility for activities carried out under the obligations of the Economic Operator. Any use of the GCCLAB mark that might contravene the conditions of use described in this guide shall be referred immediately to the Certification Body.

Configuration of the GCCLAB mark for products:

The mark "GCCLAB" for PV Panels is composed of three elements as shown in the figure (Fig. 1) below:



1: GCC LAB logo

2: The term "PV Module – Certificate", to refer to the nature of the product

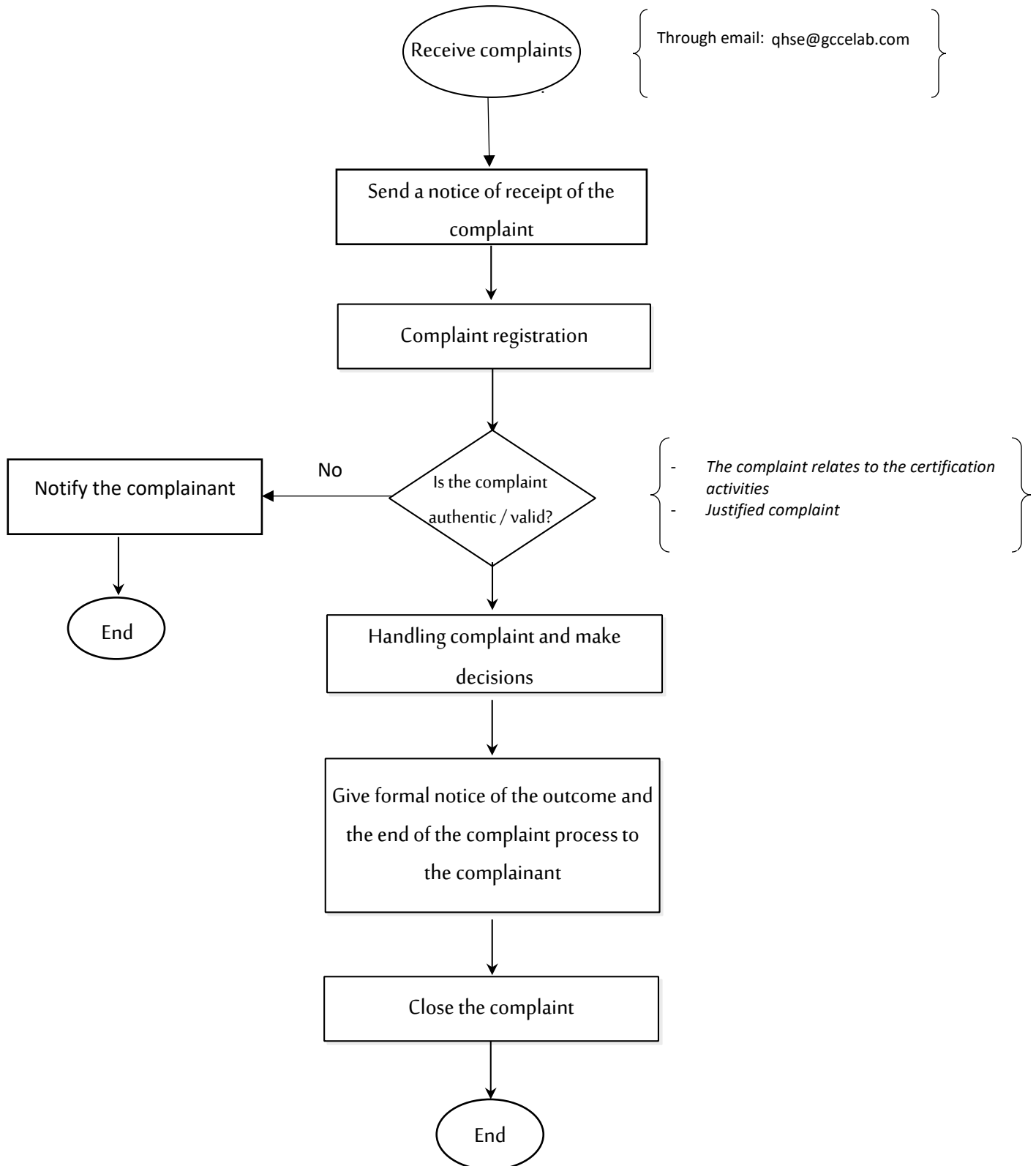
3: The number of the certificate

The GCC LAB mark, as shown in Fig.1, shall be affixed to the body of the product and/or on the nameplate.

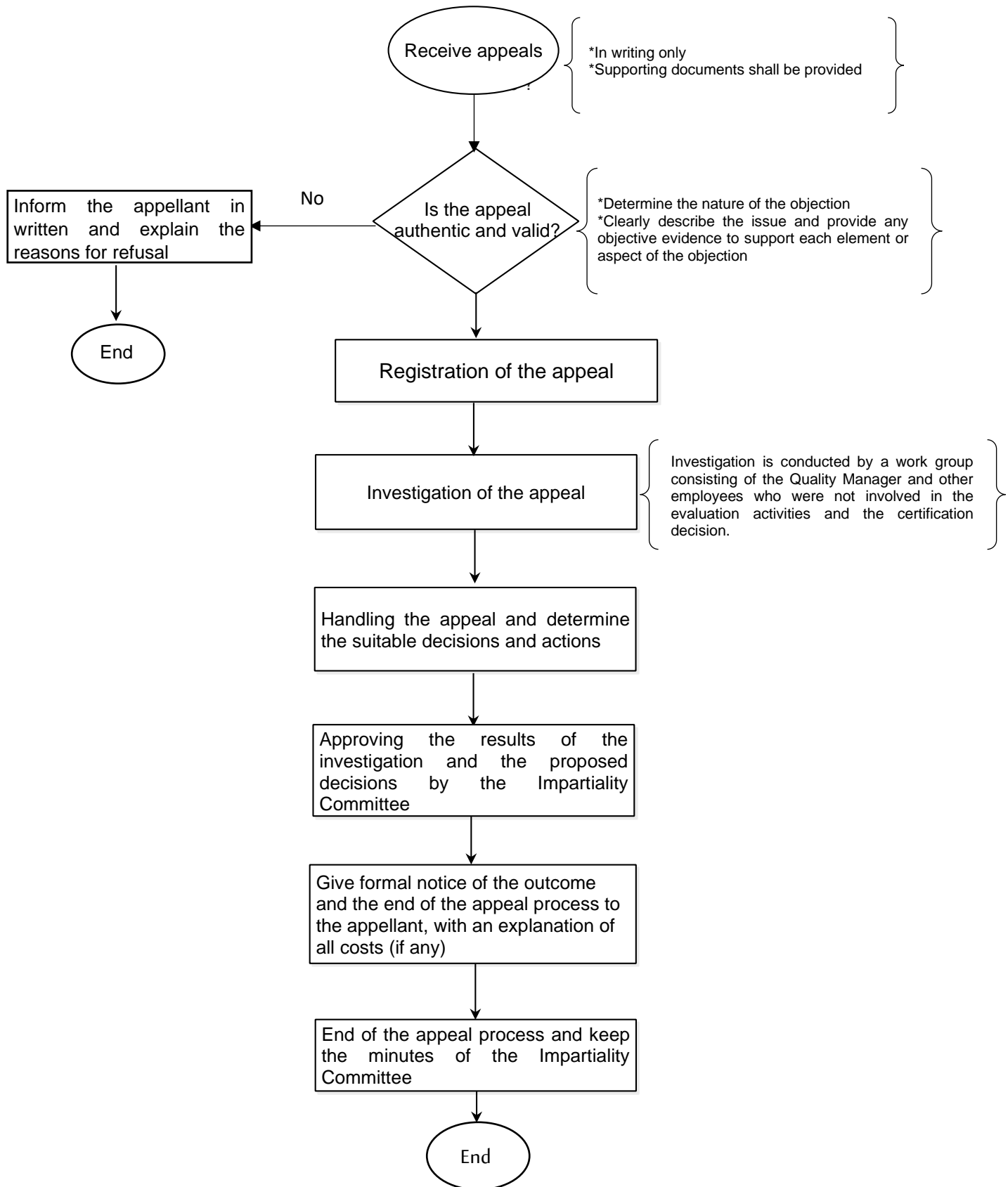
When the nameplate or label does not allow the GCC LAB to be affixed in the design format shown in Fig.1 for lack of space, it is permitted to affix the mark according to a simplified design as shown in the figure below:



COMPLAINT HANDLING PROCESS



Process For Handling Appeals



**For further inquires regarding GCCLAB certification scheme , process and fees , please contact
sales@gccelab.com**